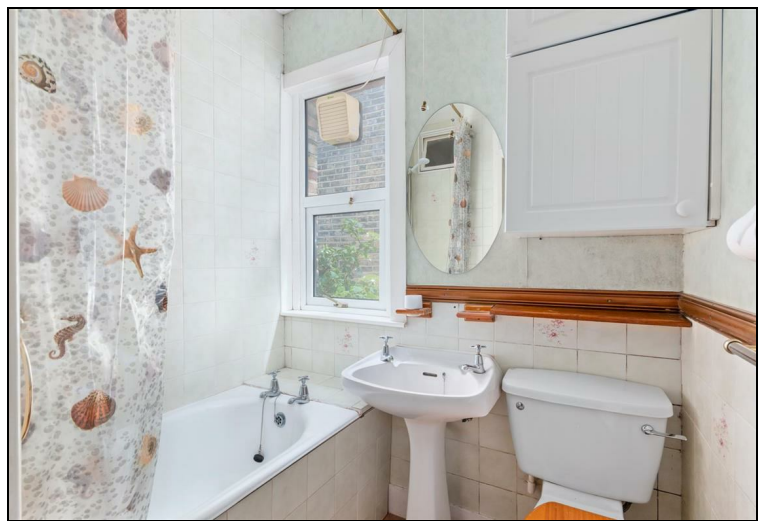


## Amity Grove West Wimbledon, SW20 0LJ

£950,000 Freehold



**This attractive 1246 sqft FOUR BEDROOM Victorian Semi Detached House has a lovely 56ft rear garden with side access and offers superb potential to extend s.t.p.p. Located on a highly desirable Road just off of Raynes Park High Street and within only 0.2 miles to Raynes Park Station. There is a separate front reception room, semi open kitchen dining room, lean to extension, downstairs W.C, four bedrooms and a family bathroom. Offered to the market with no onward chain. Residents Parking Permits available for on street parking.**



Although these particulars are believed to be correct, their accuracy is not guaranteed and they do not form part of any contract.

**Celebrating 30 years  
of successful Sales and  
Lettings in Merton**

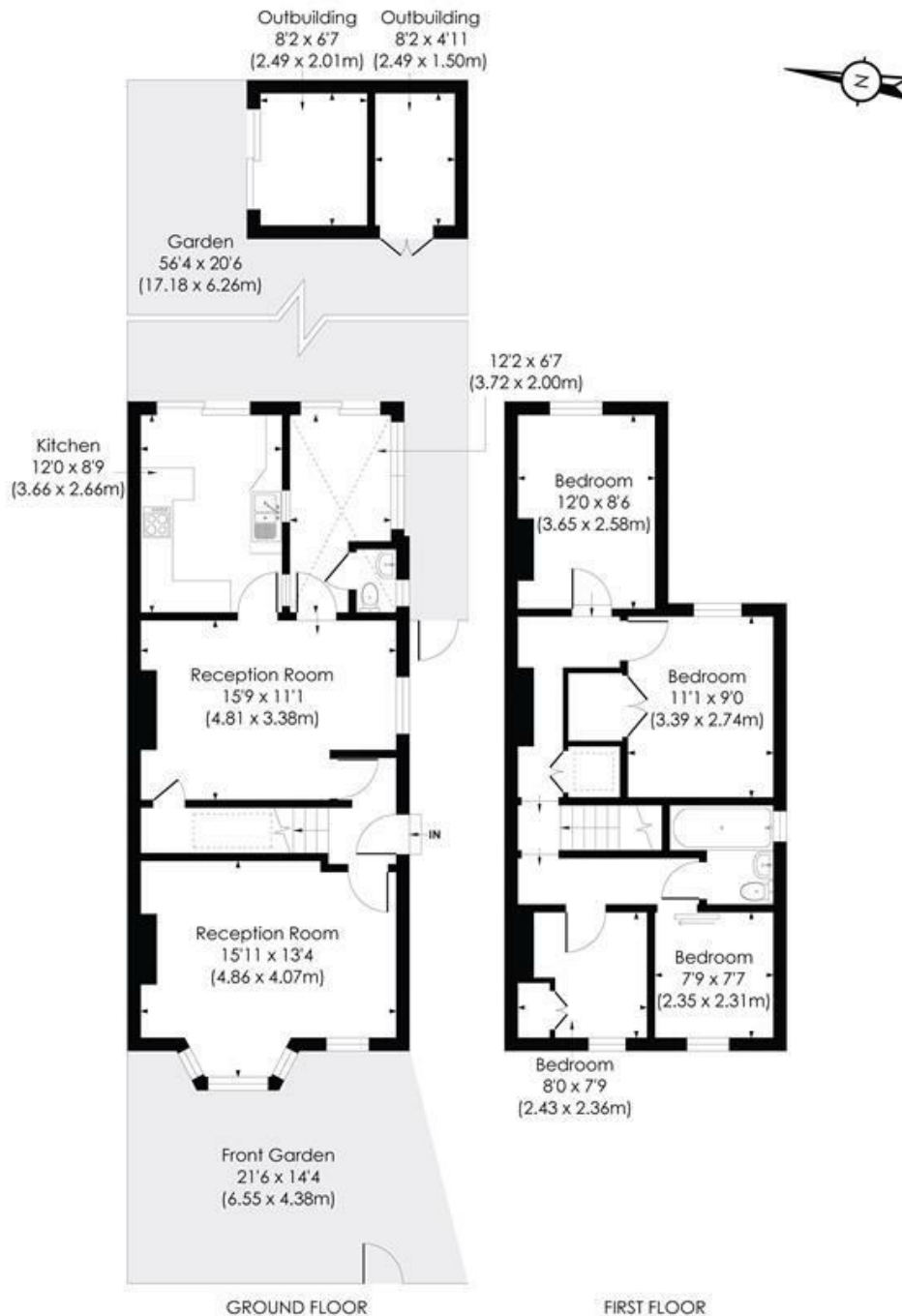


## AMITY GROVE, SW20

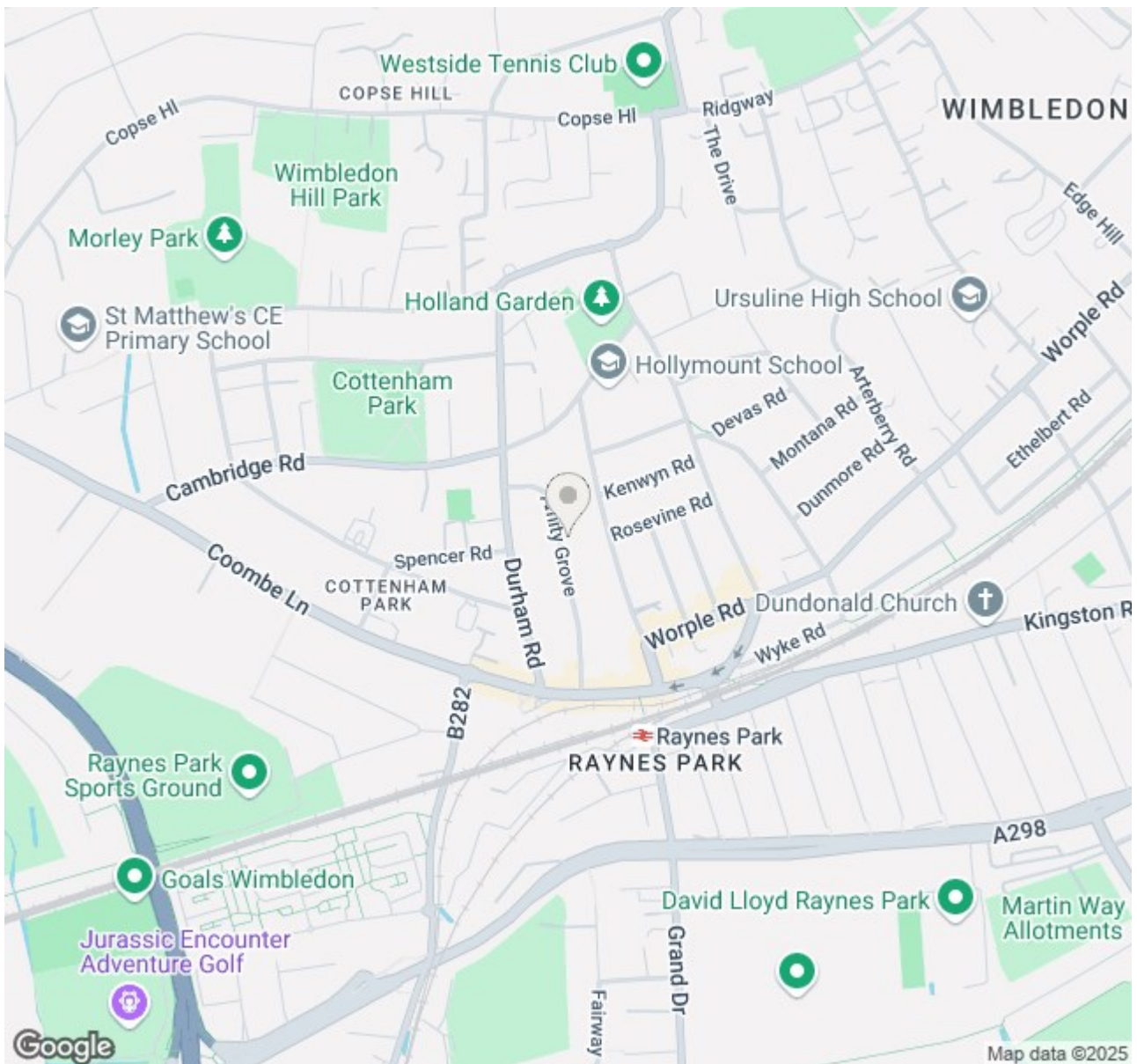
Approx. Gross Internal Floor Area

**1246 Sq. ft/115.71 Sq. m (Including Outbuildings)**

**1138 Sq. ft/105.76 Sq. m (Excluding Outbuildings)**



© Pixangle Property Marketing Ltd. info@pixangle.com Tel: 0208 870 2118



- 1246 sqft Four Bedroom
- Attractive Victorian Semi Detached House
- Potential to Extend s.t.p.p and finish to own desired taste
- 56ft Rear Garden with side access
- No Onward Chain
- Desirable Road moments form Raynes Park High Street
- 0.2 Miles to Raynes Park Station
- Excellent Family Home
- EPC - D
- Council Tax Band - E

Energy Efficiency Rating		
	Current	Potential
<i>Very energy efficient - lower running costs</i>		
(92 plus) <b>A</b>		<b>85</b>
(81-91) <b>B</b>		
(69-80) <b>C</b>		
(55-68) <b>D</b>	<b>56</b>	
(39-54) <b>E</b>		
(21-38) <b>F</b>		
(1-20) <b>G</b>		
<i>Not energy efficient - higher running costs</i>		
<b>England &amp; Wales</b>		EU Directive 2002/91/EC

For Free Mortgage Quote and Best Mortgage Rates, call Ellisons Mortgage Advisor on 0208 944 9595



Although these particulars are believed to be correct, their accuracy is not guaranteed and they do not form part of any contract.

Celebrating 30 years of successful Sales and Lettings in Merton

